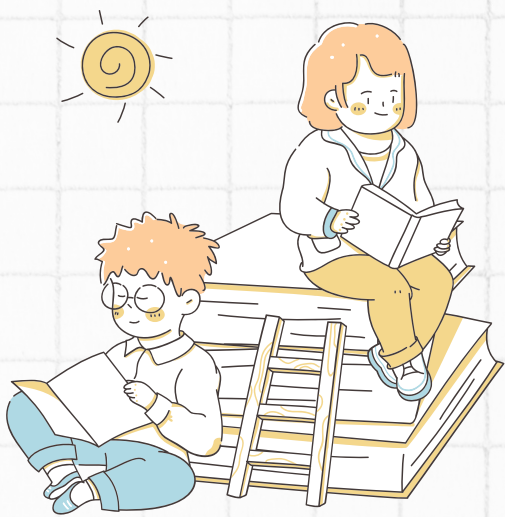


FOSTERING INCLUSIVITY IN STEM TEACHING

TIPS AND BEST PRACTICES

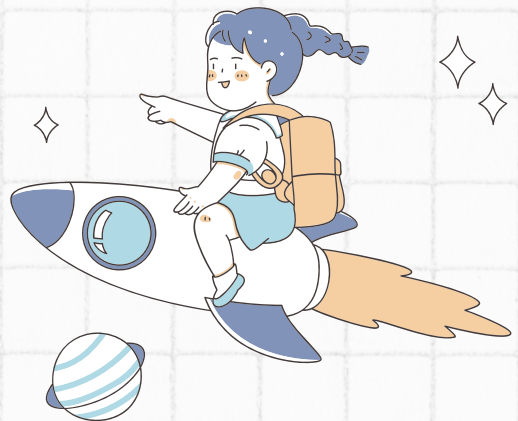


CULTIVATE INCLUSIVE ENVIRONMENT & COMMUNICATION

Foster positive and supportive classroom climate where all students feel valued and respected, encouraging open communication without penalizing opinions

ENHANCE REPRESENTATION AND COLLABORATIVE LEARNING

Using interactive classroom engagement techniques, such as active learning, can reduce achievement gaps in STEM courses

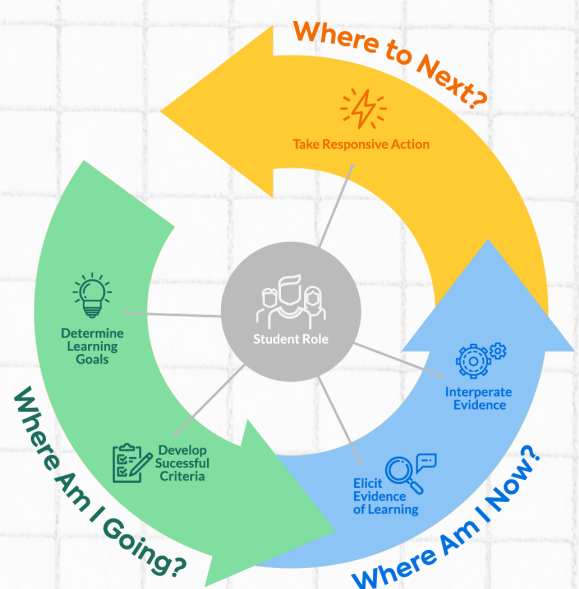


ADAPT TEACHING METHODS AND RESOURCES FOR ACCESSIBILITY

It is vital to recognize and accommodate diverse learning styles and capabilities by implementing different teaching methods and resources, ensuring that all students have the opportunity to engage with the material in ways that suit their individual needs.

CHALLENGE UNCONSCIOUS BIAS & OFFER SUPPORTIVE FEEDBACK

Individual that belongs to a group that is negatively stereotyped in a STEM field, may doubt their own capabilities and their sense of belonging to that field, losing interest through time



DESIGN INCLUSIVE LEARNING SPACES AND ADVOCATE FOR EQUITY

Creating inclusive learning spaces and advocating for equity in STEM education are essential for fostering positive attitudes toward science and encouraging students to pursue STEM careers